



**Geography Teachers'  
Association of Victoria Inc.**  
Reg No: A 003 050 5Z  
ABN: 65 550 382 751

# **GEOGRAPHY**

**Trial Examination Paper, 2022**

**EXAM B**

**DATA BOOK**

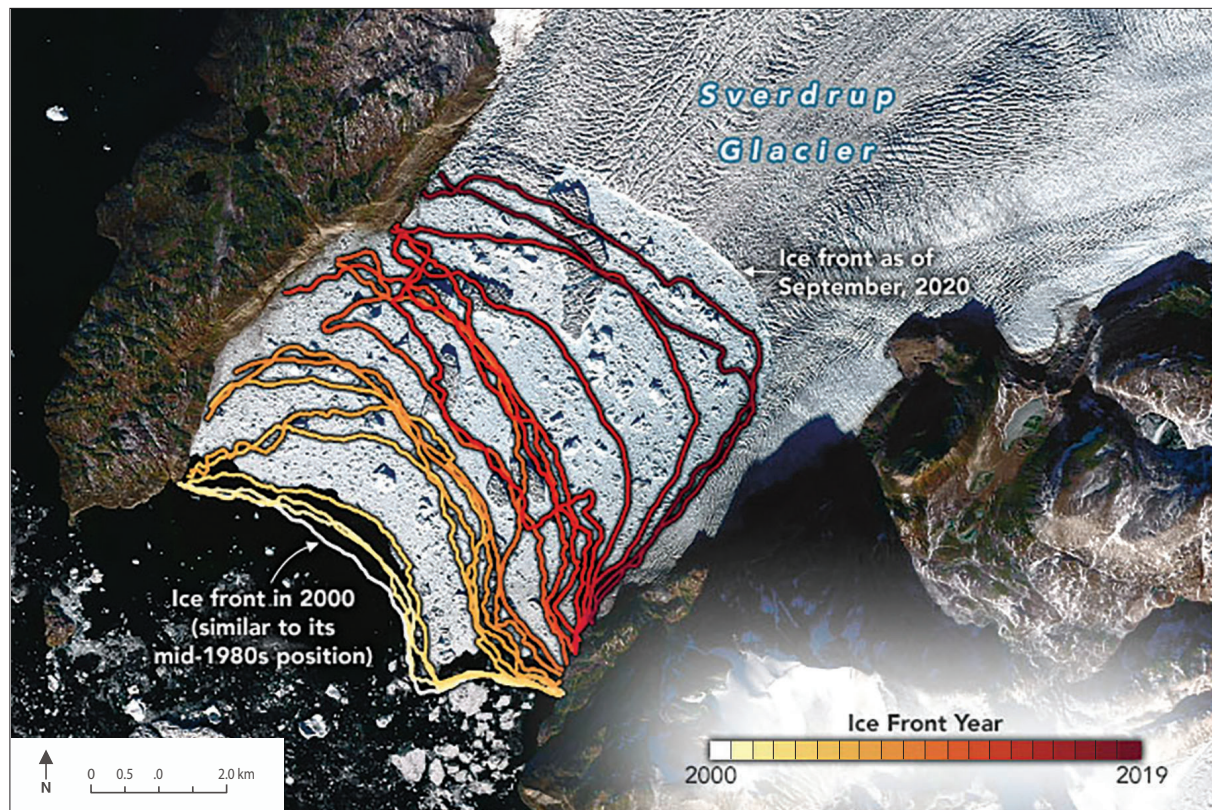
## **Directions to students**

- A question and answer book is provided with this data boo.
- Refer to the data in this book for each question as indicated in the Question and Answer boo.
- The data contained in this book is drawn from current real world case studies

**Students are NOT permitted to bring mobile phones and/or any other unauthorised electronic devices into the examination room.**

# FIGURE 1 | Changing the land

Figure 1. Retreat of the Sverdrup Glacier 2000–2020



SOURCE: NASA Earth Observatory / Image by Joshua Stevens, using Landsat data from the U.S. Geological Survey and data courtesy of Wood, M. et al. (2021)

## FIGURE 2 | Changing the land

**Figure 2a. Albert Park - selected changes over time**

- Originally a series of swamps and lagoons (part of Yarra River Delta) used by the indigenous Wurundjri people around 40,000 years before European settlement
- 1830s – Land cleared and used for stock grazing
- 1850s – Land is unofficial parkland used for military training, grazing and hunting.
- 1855 – Cricket first played at Albert Park, followed by archery, football, lacrosse and polo.
- 1870s – Swamp transformed into a lake suitable for sailing and rowing.
- 1875 – Areas of parkland sold off for housing
- 1890 – Water diverted from Yarra River to help fill the lake.
- Early 1900s – Used as a camp, a camp for armed services and recreational pursuit.
- 1993 – Grand Prix returned to Albert Park.

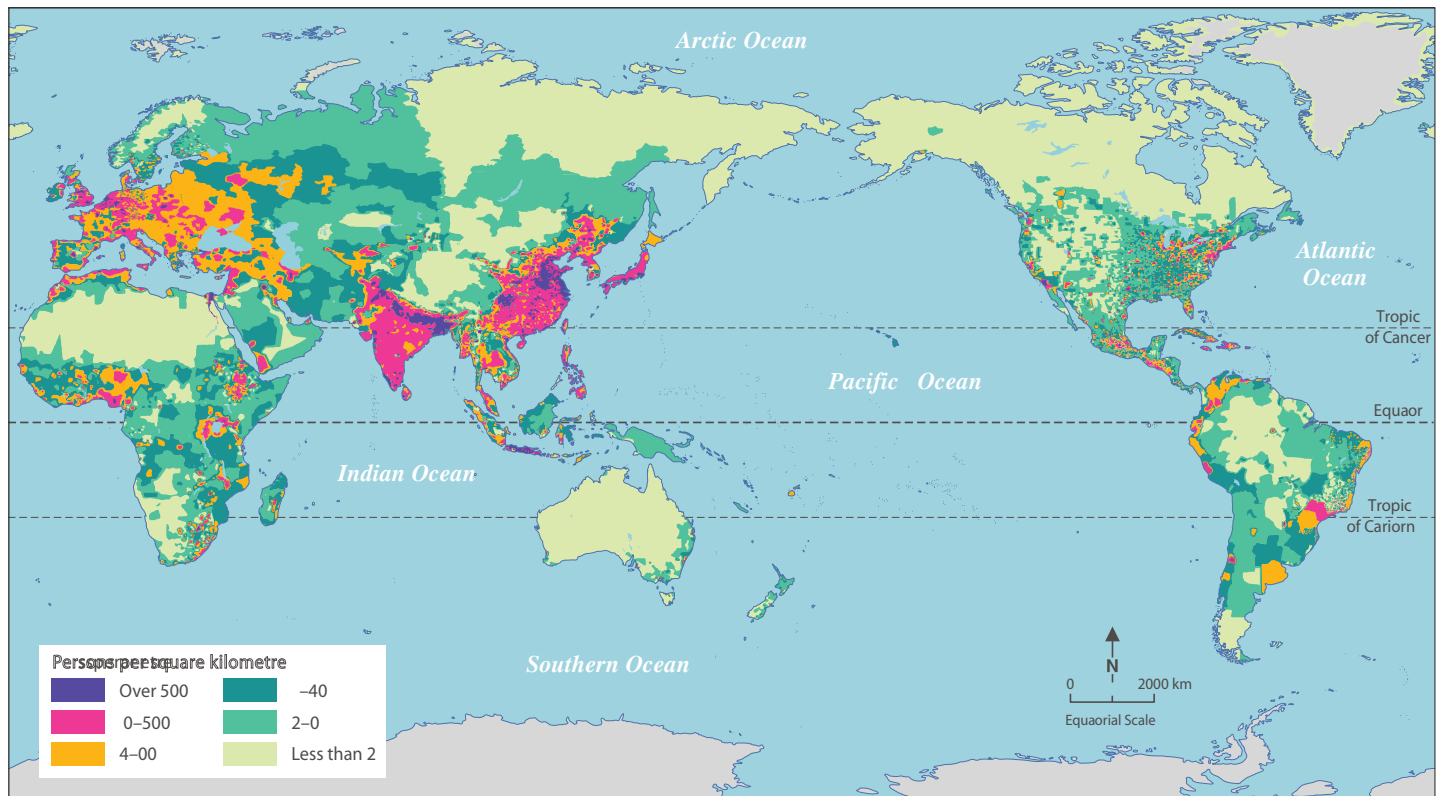
**Figure 2b. Albert Park and Lake**



SOURCE: Nils Verseemann / Shutterstock

# FIGURE 3 Human population

Figure 3. Global population distribution



DATA SOURCE: United States Department of Agriculture (USDA)

# FIGURE 4 Human population

Figure 4a. Food production modes in relation to world population over time

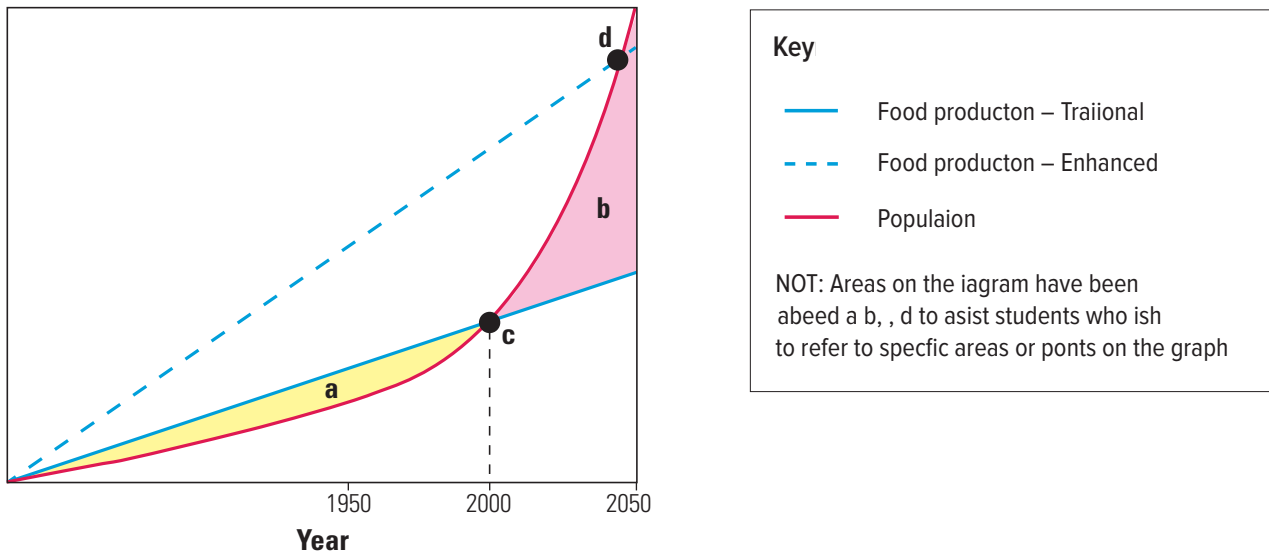
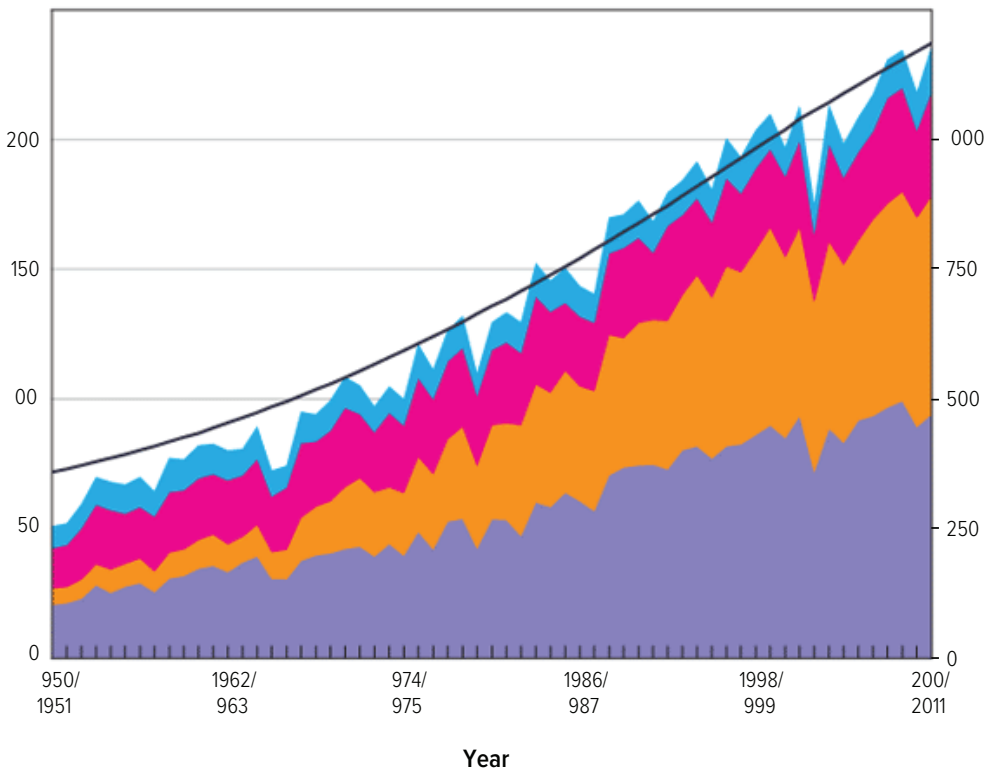


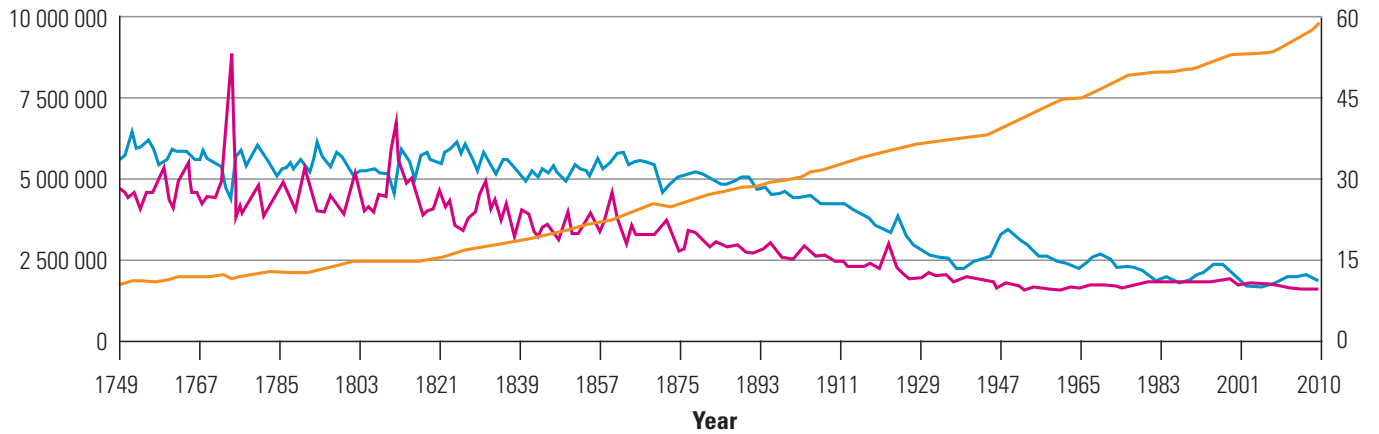
Figure 4b. India crop production and population



DATA SOURCE CEIC Data

# FIGURE 5 Human population

Figure 5. Population growth, birth rates and death rates in Sweden, 1749 –2010



**Key**

- Births in Sweden
- Deaths in Sweden
- Population of Sweden

DATA SOURCE: Max Roser / Our World in Data

**NO DATA ON THIS PAGE**

**NO DATA ON THIS PAGE**

**Editorial Notes**

**Date of publication June 2022**

IMPORTANT: This trial examination paper has been compiled independently of the Victorian Curriculum and Assessment Authority and does not in any way reflect the opinions or endorsement of the organisation. Questions and content should be treated in the context of the trial examination being only a product of the GTAV's interpretation of appropriate content and format.