



Trial Examination 2015

# **VCE Mathematical Methods (CAS) Units 3&4**

Written Examination 1

**Suggested Solutions**

Neap Trial Exams are licensed to be photocopied or placed on the school intranet and used only within the confines of the school purchasing them, for the purpose of examining that school's students only. They may not be otherwise reproduced or distributed. The copyright of Neap Trial Exams remains with Neap. No Neap Trial Exam or any part thereof is to be issued or passed on by any person to any party inclusive of other schools, non-practising teachers, coaching colleges, tutors, parents, students, publishing agencies or websites without the express written consent of Neap.

**Question 1 (3 marks)**

a.  $h(x) = x \sin(x^2) = u(x)v(x)$ , where  $u(x) = x$  and  $v(x) = \sin(x^2)$ .

Hence  $u'(x) = 1$  and  $v'(x) = 2x \cos(x^2)$ .

$$h'(x) = v(x)u'(x) + u(x)v'(x) \quad \text{M1}$$

$$= \sin(x^2) \times 1 + x \times 2x \cos(x^2)$$

$$= \sin(x^2) + 2x^2 \cos(x^2) \quad \text{A1}$$

b.  $h'\left(\sqrt{\frac{\pi}{2}}\right) = \sin\left(\frac{\pi}{2}\right) + 2 \times \frac{\pi}{2} \cos\left(\frac{\pi}{2}\right)$

$$= 1 \quad \text{A1}$$

**Question 2 (3 marks)**

$$\begin{aligned}
 f(x) &= e^{5x}(e^x + e^{-x}) \\
 &= e^{5x} \times e^x + e^{5x} \times e^{-x} \\
 &= e^{5x+x} + e^{5x-x} \\
 &= e^{6x} + e^{4x}
 \end{aligned}$$

$$\begin{aligned}
 \text{Hence } \int f(x) dx &= \int (e^{6x} + e^{4x}) dx \\
 &= \int e^{6x} dx + \int e^{4x} dx \\
 &= \frac{e^{6x}}{6} + \frac{e^{4x}}{4} + C, \text{ where } C \text{ is a constant.}
 \end{aligned}$$

M1

$$g(x) = \frac{e^{6x}}{6} + \frac{e^{4x}}{4} + C \text{ for a particular value of the constant } C.$$

Since we are given that  $g(0) = 0$ , we can find the value of  $C$ .

$$\begin{aligned}
 g(0) &= \frac{e^{6 \times 0}}{6} + \frac{e^{4 \times 0}}{4} + C \\
 &= \frac{e^0}{6} + \frac{e^0}{4} + C \\
 &= \frac{1}{6} + \frac{1}{4} + C \\
 &= \frac{5}{12} + C
 \end{aligned}$$

M1

$$\text{Thus } 0 = \frac{5}{12} + C$$

$$C = -\frac{5}{12}$$

$$g(x) = \frac{e^{6x}}{6} + \frac{e^{4x}}{4} - \frac{5}{12}$$

A1

**Question 3 (4 marks)**

a.  $\sin\left(2x - \frac{\pi}{6}\right) = \frac{\sqrt{3}}{2} \quad -\pi < x < \pi$

$$2x - \frac{\pi}{6} = \sin^{-1}\left(\frac{\sqrt{3}}{2}\right)$$

$$= \frac{\pi}{3}$$

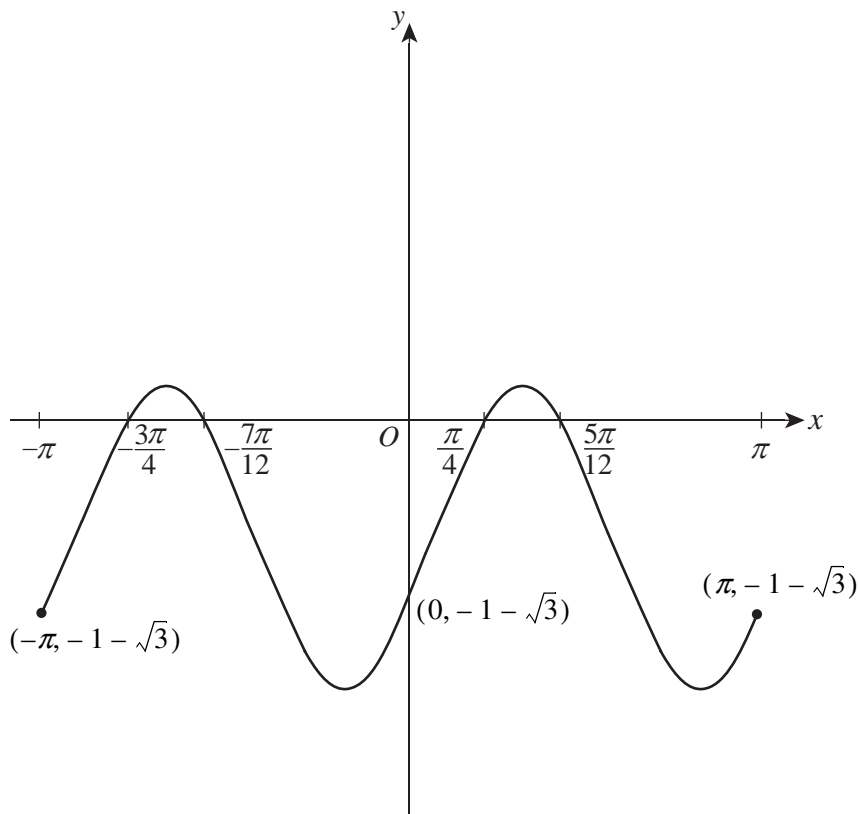
$$2x - \frac{\pi}{6} = \frac{\pi}{3} \qquad -\frac{13\pi}{6} < 2x - \frac{\pi}{6} < \frac{11\pi}{6} \qquad \text{M1}$$

$$2x - \frac{\pi}{6} = -\frac{5\pi}{3}, -\frac{4\pi}{3}, \frac{\pi}{3}, \frac{2\pi}{3}$$

$$2x = -\frac{3\pi}{2}, -\frac{7\pi}{6}, \frac{\pi}{2}, \frac{5\pi}{6}$$

$$x = -\frac{3\pi}{4}, -\frac{7\pi}{12}, \frac{\pi}{4}, \frac{5\pi}{12} \qquad \text{A1}$$

b.



*correct shape A1*  
*correct intercepts and endpoints A1*

**Question 4 (3 marks)**

$$3 \times 9^{x+1} + 1 - 5^2 \times 3^x - 3^{x+1} = 0$$

$$3 \times (3^2)^{x+1} + 1 - 25 \times 3^x - 3^{x+1} = 0$$

$$3 \times 3^{2x} \times 9 + 1 - 25 \times 3^x - 3 \times 3^x = 0$$

$$27 \times 3^{2x} - 28 \times 3^x + 1 = 0$$

$$27 \times 3^{2x} - 28 \times 3^x + 1 = 0$$

*quadratic form* M1Let  $3^x = a$ .

$$27a^2 - 28a + 1 = 0$$

$$(27a - 1)(a - 1) = 0$$

$$a = \frac{1}{27}, 1$$

A1

Therefore  $3^x = \frac{1}{27}, 1$ . $3^x = 1$  gives  $x = 0$  and  $3^x = \frac{1}{27}$  gives  $x = -3$ .

A1

**Question 5 (5 marks)****a.** Method 1:

Complete the square to find the turning point:

$$f(x) = -\left(x - \frac{1}{2}\right)^2 + \frac{25}{4}$$

M1

Coordinates are  $\left(\frac{1}{2}, \frac{25}{4}\right)$ .

A1

Method 2:

$$f'(x) = 1 - 2x$$

There is a maximum when  $f'(x) = 0$ .

M1

$$1 - 2x = 0$$

$$x = \frac{1}{2}$$

$$f\left(\frac{1}{2}\right) = \frac{25}{4}$$

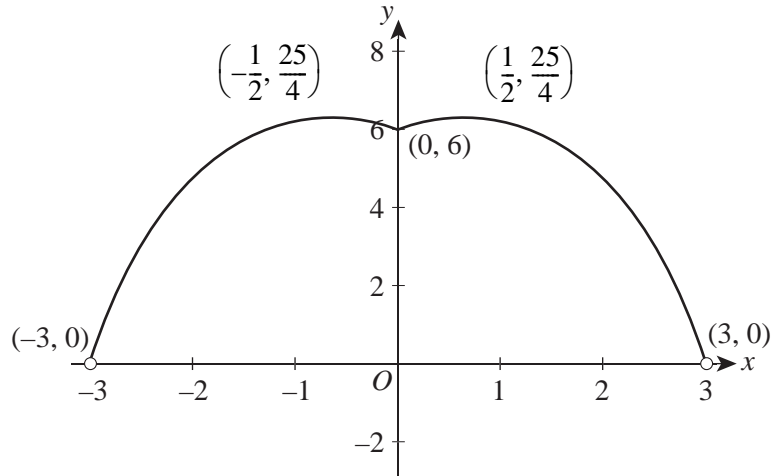
Coordinates are  $\left(\frac{1}{2}, \frac{25}{4}\right)$ .

A1

**b. i.**  $f(g(x)) = 6 + |x| - |x^2|$ domain:  $x \in (-3, 3)$ 

A1

ii.



*correct shape A1*  
*correct intercepts and turning points A1*

**Question 6 (4 marks)**

a. Let  $u = x^3 + 1$  and then  $y = \log_e(u)$ .

$$\frac{dy}{du} = \frac{1}{u} \text{ and } \frac{du}{dx} = 3x^2.$$

M1

The chain rule states that  $\frac{dy}{dx} = \frac{dy}{du} \times \frac{du}{dx}$ .

$$\text{Hence } \frac{dy}{dx} = \frac{1}{u} \times 3x^2$$

$$= \frac{1}{x^3 + 1} \times 3x^2$$

$$= \frac{3x^2}{x^3 + 1}$$

A1

- b. By the fundamental theorem of calculus,  $\int \frac{3x^2}{x^3 + 1} dx = \log_e(x^3 + 1) + C$ , where  $C$  is a constant.

$$\begin{aligned} \text{However, } (x + x^{-2})^{-1} &= \frac{1}{x + x^{-2}} \\ &= \frac{1}{x + x^{-2}} \\ &= \frac{x^2}{x^3 + 1} \end{aligned}$$

M1

We can find the required antiderivative as follows:

$$\begin{aligned} \int (x + x^{-2})^{-1} dx &= \int \frac{x^2}{x^3 + 1} dx \\ &= \frac{1}{3} \times \int \frac{3x^2}{x^3 + 1} dx \\ &= \frac{1}{3} \log_e(x^3 + 1) + K, \text{ where } K \text{ is a constant, since } K = \frac{C}{3}. \end{aligned}$$

A1

#### Question 7 (4 marks)

- a.  $C = \text{floor} + \text{roof} + \text{walls} + \text{foundations}$

$$\begin{aligned} &= \frac{80}{9}s^2 + \frac{40}{9}s^2 + 40sh + 40s \\ &= \frac{40}{3}s^2 + 40sh + 40s \end{aligned}$$

A1

- b.  $4800 = \frac{40}{3}s^2 + 40sh + 40s$

$$120 = s\left(\frac{s}{3} + h + 1\right)$$

$$\frac{120}{s} - \frac{s}{3} - 1 = h$$

$$h = \frac{360 - s^2 - 3s}{3s}$$

A1

- c.  $V = s^2h$

$$= s^2 \left( \frac{360 - s^2 - 3s}{3s} \right)$$

$$= 120s - \frac{s^3}{3} - s^2$$

A1

$$\text{d. } \frac{dV}{ds} = 120 - s^2 - 2s$$

$$\begin{aligned} \frac{dV}{ds} = 0 \text{ when } 0 &= 120 - s^2 - 2s \\ &= s^2 + 2s - 120 \\ &= (s - 10)(s + 12) \end{aligned}$$

$$s = 10 \text{ and } s = -12$$

Since  $s > 0$ ,  $s = 10$ .

$$\begin{aligned} \text{When } s = 10, h &= \frac{360 - 10^2 - 3(10)}{3(10)} \\ &= \frac{230}{30} \\ &= \frac{23}{3} \text{ m} \end{aligned}$$

A1

### Question 8 (3 marks)

Let  $y = g(x)$ .

$$y - 2 = \frac{1}{(3x - 1)^2}$$

From the transformation,  $x' = a(x + b)$  gives  $a(x + b) = 3x + 1$

$$ax + ab = 3x + 1$$

$$a = 3$$

A1

$$b = \frac{1}{3}$$

A1

$y' = y + c$  gives  $y + c = y - 2$

$$c = -2$$

A1

### Question 9 (5 marks)

$$\text{a. } \Sigma p(x) = 1$$

$$3k^2 - 1 + 3k + 4k + 2k + k = 7$$

M1

$$3k^2 + 10k - 8 = 0$$

$$(3k - 2)(k + 4) = 0$$

$$k = \frac{2}{3}, -4$$

A1

Since  $k > 0$ ,  $k = \frac{2}{3}$ .

*one solution only* A1



b.  $\Pr(X \geq 1) = 1 - \Pr(X = 0)$

M1

$$\Pr(X = 0) = \frac{3\left(\frac{2}{3}\right)^2 - 1}{7}$$

$$= \frac{1}{7}\left(\frac{4}{3} - 1\right)$$

$$= \frac{1}{21}$$

$$\Pr(X \geq 1) = 1 - \frac{1}{21}$$

$$= \frac{20}{21}$$

A1

**Question 10 (6 marks)**

a. Since  $f(x)$  is a probability density function,  $\int_{-\infty}^{\infty} f(x) dx = 1$ .

$$\int_{-\infty}^{\infty} f(x) dx = \int_{-\infty}^0 f(x) dx + \int_0^1 f(x) dx + \int_1^{\frac{7}{3}} f(x) dx + \int_{\frac{7}{3}}^{\infty} f(x) dx$$

$$1 = \int_{-\infty}^0 0 dx + \int_0^1 kx^2 dx + \int_1^{\frac{7}{3}} \left(\frac{7k-3x}{4}\right) dx + \int_{\frac{7}{3}}^{\infty} 0 dx$$

M1

$$1 = 0 + \left[\frac{kx^3}{3}\right]_0^1 + \left[\frac{7k}{4}x - \frac{3x^2}{8}\right]_1^{\frac{7}{3}} + 0$$

$$1 = \frac{k}{3} + \left(\frac{7k}{4} \times \frac{7}{3} - \frac{3}{8}\left(\frac{7}{3}\right)^2\right) - \left(\frac{7k}{4} - \frac{3}{8}\right)$$

$$1 = \frac{k}{3} + \frac{49}{12}k - \frac{49}{24} - \frac{7k}{4} + \frac{3}{8}$$

$$1 = \frac{64k}{24} - \frac{40}{24}$$

$$\frac{64}{24} = \frac{64k}{24}$$

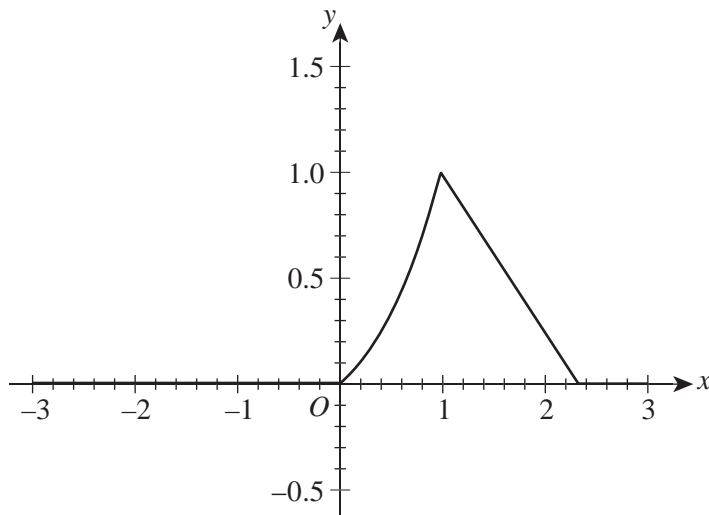
$$k = 1$$

A1

b. Since  $k = 1$ :

$$f(x) = \begin{cases} x^2 & 0 \leq x \leq 1 \\ \frac{7-3x}{4} & 1 < x \leq \frac{7}{3} \\ 0 & \text{elsewhere} \end{cases}$$

The mode is the value of  $x$  for which  $f(x)$  is a maximum. This can be found by sketching the graph.



maximum value of  $f(x)$  occurs when  $x = 1$ , therefore mode = 1

M1

A1

c. The mean is given by  $\int_{-\infty}^{\infty} xf(x)dx$ .

$$\int_{-\infty}^{\infty} xf(x)dx = \int_0^1 xf(x)dx + \int_1^{\frac{7}{3}} xf(x)dx$$

$$= \int_0^1 x^3 dx + \int_1^{\frac{7}{3}} \frac{7x - 3x^2}{4} dx$$

M1

$$= \left[ \frac{x^4}{4} \right]_0^1 + \left[ \frac{7x^2}{8} - \frac{x^3}{4} \right]_1^{\frac{7}{3}}$$

$$= \frac{1}{4} + \left( \frac{7\left(\frac{7}{3}\right)^2}{8} - \frac{\left(\frac{7}{3}\right)^3}{4} \right) - \left( \frac{7}{8} - \frac{1}{4} \right)$$

$$= \frac{1}{4} + \left( \frac{343}{72} - \frac{343}{108} \right) - \frac{5}{8}$$

$$= \frac{1}{4} + \left( \frac{1029}{216} - \frac{686}{216} \right) - \frac{5}{8}$$

$$= \frac{1}{4} + \frac{343}{216} - \frac{5}{8}$$

$$= \frac{54}{216} + \frac{343}{216} - \frac{135}{216}$$

$$= \frac{262}{216}$$

$$\text{mean} = \frac{131}{108}$$

A1